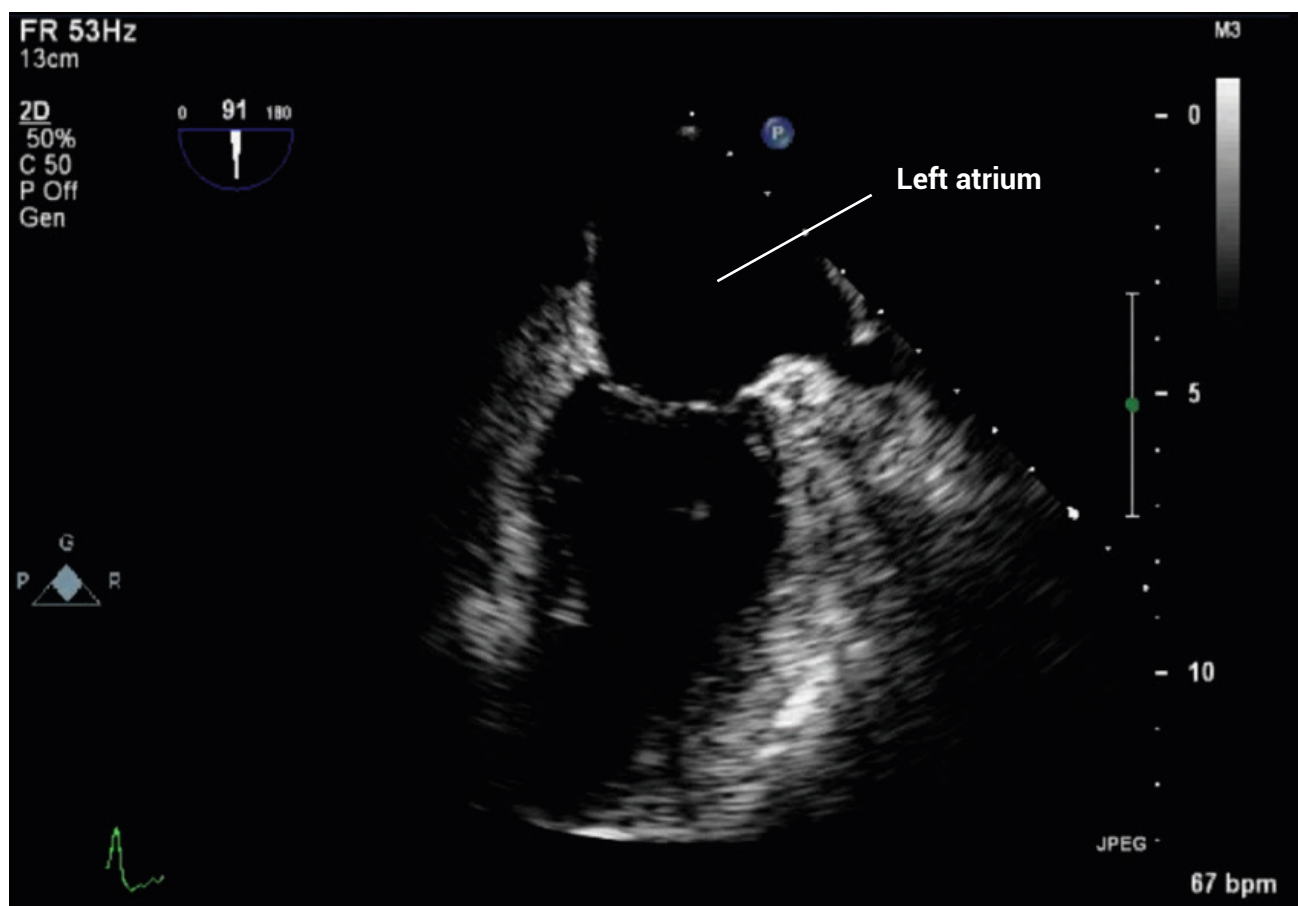


TEE ESSENTIALS

Assessment of the left atrium and appendage: Mid-esophageal two-chamber view

This TEE view is obtained at the mid-esophageal level, using a transducer angle of 80–100°. Be sure to assess the whole of the left atrium by turning the probe from left to right, in order to sweep the probe across the chamber.



Check for any abnormalities such as spontaneous contrast, left atrial thrombus, or an atrial myxoma.

Left atrial measurements should not be taken in this view; use the mid-esophageal four-chamber view instead.

Further reading

Hahn RT, Abraham T, Adams MS, et al. 2013. Guidelines for performing a comprehensive transesophageal echocardiographic examination: Recommendations from the American Society of Echocardiography and the Society of Cardiovascular Anesthesiologists. *J Am Soc Echocardiogr*. **26**: 921–964.